

Version 2535
August 19, 2025

- C&C Elevation button enabled wasn't updating when transitioning to/from a C&C Method that uses Elevation
- Fix Missing and Incorrect values for MWFRS Wind Pressures at 90 deg

Version 2534
July 16, 2025

- Fix bug that caused Analysis to crash when the CCSummary was enabled
- Added the ability to send feature request under Help > Request A Feature
- ASCE 7-22 Incorporate Errata into Step Building Figure 30.3-3

Version 2533
July 10, 2025

- ASCE 7-22 Incorporate Errata into Figure 30.4-1 Wall values
- Enable auto populate CC button for Ultimate users
- Auto hide invalid CC zones in CC summary for ultimate users
- Fix issues with Webview causing analysis to crash

Version 2532
June 30, 2025

- Removed Help Button from Input Echo in report since it's not useful
- Corrected Mansard roof Location ID #'s.
- Fix visibility for Eht when custom roof is selected for Monoslope buildings
- Removed 'beta feature' warning for custom roof selection

Version 2531
June 18, 2025

- Fixed issue with CCLocation not changing with a new location is selected
- Fixed an issue with the MWFRS graphic in the analysis causing the analysis to crash

Version 2530
June 03, 2025

- Fixed Sawtooth CC for Standards A16 and A22. Setup figures to handle zones 3A and 3BCD
- General changes made to improve application performance
- Fixed a memory leak issue if analysis was ran multiple times before closing the application

Version 2529
May 22, 2025

- Fix issue with missing report sections

Version 2528
May 13, 2025

- Performance Improvements
- Improve Report Window
- Improve Report Layout

Version 2527
May 06, 2025

- Fix FBC Standard not showing up for Pro Licenses
- Fix CCLoc showing an error when there is none
- Fix columns UI options not appearing when selected for Open Buildings

Version 2526
April 23, 2025

- Add dimensions to Tower Truss and Rooftop Equipment
- Fix C&C showing up in output despite no C&C being selected

- Replace error message showing up for no valid CCBasis with a MecaBox pop up notifying C&C was reset to none due to no valid C&C for the selected standard
- Fix CC summary tables not correctly being removed when unchecked from TOC

Version 2525
April 15, 2025

- Fix base distance reference elevation being calculated in inches rather than feet
- Fix zone 4 not being editable in C&C zones
- Cleanup output for freestanding wall
- ASCE 7-10 fix GCpi reference figure
- Parapet GCpi was displaying as 0
- Parapet C&C show two sets of data, one with +GCpi and the other with -GCpi. The next pressure is unchanged, but pressure on each surface is different.

Version 2524
March 20, 2025

- Fix missing Zones from C&C Summary

Version 2523
March 11, 2025

- Report-a-bug window modified to allow user to attach file(s)
- Fix CC crash
- Fix Null exception in TableCol

Version 2522
March 04, 2025

- A722 Fig 30.4-1 needed to add Partial Open option which was added in A722
- C&C Summary wasn't including Parapet information
- Fix Open Pitched roof type perpetually loading

Version 2521
February 21, 2025

- Fix unwanted values displaying in CC table when a manual height is set
- Fix parapet header displaying when no parapet zones/summary is set
- Gust factor details were not being displayed in output.
- Natural Frequency Estimator had problems

Version 2520
February 20, 2025

- Fix CC dropdowns not working

Version 2519
February 19, 2025

- Fix typo 'Ration' to 'Ratio' in Wizard > Misc
- Fix help menu crashing due to common unit error
- C&C Graphic not updating when building dim's changed
- Ultimate - Valid zones not updating and giving appropriate warnings when building dim's changed

Version 2518
February 17, 2025

- Fix Vi Input issues
- Fix Aog not appearing for monoslope and some other partially enclosed roof types
- Fix Base Dist error message appearing when it wasn't visible

Version 2517
February 11, 2025

- speed improvements across the application
- ASCE 7-05/10/16 C&C Ch 30 Pt 2 wasn't including Overhang Zones
- C&C Summary for OH checkbox wasn't always displaying
- C&C Check to see if Overhang zone valid was only checking Soffits and was showing all Overhangs as Invalid
- ASCE 7-05/10 C&C Ch 30 Pt 2 was showing Key Diagrams associated with ASCE 7-16

Version 2516
February 06, 2025

- Fix errors when pitch changes cause invalid zones
- C&C Summary only, wasn't displaying 'a' parameter

Version 2515
January 31, 2025

- Fix CC Database inaccessible error
- Fix hipped unit errors
- Fix Hipped C&C graphic issues
- Fix parapet height not updating correctly

Version 2514
January 27, 2025

- Fix issues with Chimney Analysis Report
- Fix issues with chimney Validation
- Fix issues with Perform Analysis Global Validation Notices
- Fix CC Generate Elevations

Version 2513
January 23, 2025

- Bin Calculation had wrong formula displayed for Axy
- Bin was using h/D instead of H/D for bin determination of zone 1 width b
- Fix Chimney error with Waddl Field
- Fix Display of Solid Sign

Version 2512
January 22, 2025

- Fix saving issue with Sawtooth & MultiGabled
- Fix missing validation notices on tabs
- Fix End Slope error
- Fix analysis crashing error on C&C Summary
- Fix C&C Summary Table missing values

Version 2511
January 21, 2025

- Fix User Interface error with LShaped - Hipped

Version 2510
January 14, 2025

- When C&C Summary ONLY is selected, include the C&C Zone graphic in output
- Address some performance issues that was causing slow analysis (Especially Elevated w/ Floor)
- C&C Effective width was being calculated in units of inch rather than feet

Version 2509
January 13, 2025

- ASCE 7-22 Elevated building with floor was not including MWFRS or C&C calculations in output.

Version 2508
January 03, 2025

- Fix crashing when changing from imperial to metric then changing building type
- Fix validation for roof zones
- Fix error for international users who use a comma instead of a period for digit grouping and vice versa for decimals.

Version 2507
January 02, 2025

- Fix false error showing in C&C collection
- Fix duplicate entries showing in Roof/Wall Detailed Table
- Fix issue with C&C crashing
- Fix missing zones for enclosed monoslope buildings

Version 2506
December 27, 2024

- C&C Summary for Open Building wasn't displaying

Version 2505
December 10, 2024

- Fix issue with units displaying in Imperial when they should be in Metric

Version 2504
December 09, 2024

- Hipped Roof add option to default hipped slope to match main roof slope
- Add Custom Roof Option for Gabled, Monoslope and Flat. This is an Ultimate feature and allows custom overhangs on each side and Ridge offset for gabled.
- C&C Graphics option added for Ultimate version, which provides a graphical representation of the C&C zones for the building.
- C&C Validation that indicates when a zone is not physically possible (Ultimate Version)
- Improvements to MWFRS and C&C Output formatting and organization
- Stepped roof option saw significant improvements and is now represented as a true stepped roof.
- Solid Sign add Moments about base of sign to calculations

Version 2503
December 04, 2024

- Fix issue with missing FBC standards on Network version of Pro and Ult

Version 2502
November 27, 2024

- Kzt calculation was incorrectly using Z in inches rather than feet in one section
- Pro and Ult were not seeing FBC standards

Version 2501
November 25, 2024

- CEFSharp Rollback to fix issue with running Meca software simultaneously

Version 2500
November 13, 2024

- FBC 23 Ch 30 Pt 1 wasn't including Kd
- Fixed dimension sliders for text size, placement, and arrow size
- Fixed discrepancy when calculating GaH2 for solar panels on A722
- Fixed C&C image for Gabled roofs A716
- General performance improvements for C&C tab

Version 2499
November 07, 2024

- Fixed graphic for parapet
- Fix missing C&C Zones for tall L-Shaped buildings

Version 2498
November 01, 2024

- Added Hipped End Pitch of Roof to Hipped Roofs in the UI
- Fix DeferRefresh Error
- FBC23 Ch30 Part 2 had bug where it wasn't using formula for pressure with Kd included
- Fix validation for Zi so that it reflects in the UI

Version 2497
October 28, 2024

- Fix qz & qh analysis error

Version 2496
October 28, 2024

- Fix Overhang Save button error

Version 2495
October 28, 2024

- Fix C&C Database Saving
- MWFRS Graphics for elevated building was not working.

Version 2494
October 24, 2024

- Major fix to speed issues. Program runs much smoother now
- Fix to validation issues in Overhangs
- Fix to cancel button deleting saved Overhang
- Fix to arched building validation
- Fix to Mansard Ridge Height data entry error
- Fix to tab colors not reflecting errors correctly
- C&C Zone handling improvement
- C&C Tab Improvements and Fixes
- Overhang improvements and fixes

Version 2493
October 17, 2024

- Fix issue with Database on C&C tab causing a crash
- General backend changes

Version 2492
October 09, 2024

- Fix file save/load key not being found for older being loaded

Version 2491
October 08, 2024

- Fix window sizing for MWFRS and C&C window so that contents stay in window and the window can be resized as needed

Version 2490
October 07, 2024

- Fix and improve Transverse Frames
- C&C Add ability to produce C&C summary for ASCE 7-05
- C&C Clean up and consolidate many of the notes at the bottom of C&C Detailed and C&C Summary Tables
- C&C Change functionality to use same logic for all detailed tables
- C&C Fix many errors found in ASCE 7-05 calculations

Version 2489
September 27, 2024

- Fix inputs missing from tables

Version 2488
September 25, 2024

- Fix graphical issues with how roofs were generated on some enclosed building types which impacted our MWFRS reports.
- Fixed issues with OverHangs on several enclosed roof types

Version 2487
September 16, 2024

- Fix missing C&C Zones for Partially Open on Stepped Building

Version 2486
September 13, 2024

- Fix Qh value returning incorrect units
- Fix CC type changing during analysis
- Fix solar exposed 29.4.4 and cleaned up notes

Version 2485
Aug 29, 2024

- Improve Application Opening Speed
- Fixed Metric calculations for Enclosed buildings on stilts/elevated

Version 2484
Aug 26, 2024

- Fix issues with Tornado pressures that were not always correct
- C&C Changed designation from Pmax and Pmin to Puplift and Pdown to be a little more descriptive over what they represent
- Parapet Ht validation warning was incorrectly comparing to RHt rather than RHt-EHt

Version 2483
Aug 13, 2024

- ASCE 7-16 fix units for Solar Panel qz/qh that sometimes led to wrong value
- Solar Panels fix validation so it refreshes on FileIO
- Solar Roof move equation for W to tooltip because column too wide on form
- MWFRS Roof Pressure Table Reformatted to separate regions based upon GCpi values. Also cleaned up table and notes to be clearer.
- MWFRS Pressures on soffits not always handled correctly for roofs, the GCpi was 0 rather than using building value.
- Hipped roof area calculation was not working correctly

Version 2482
July 29, 2024

- Fix HtMan not being able to change value from 0 for Solar Roof Structure Type
- Fix validation issues for IsCol
- Fix output showing 'MecaLibrary.RefEntry' when it was supposed to show which figure was being referenced
- Setup building dimensions to show for Solar Roof Structure types

Version 2481
July 3, 2024

- A716 Ch 28 Pt 2 the pressures at $V = 200$ mph were not right
- A716 Ch 28 Pt 2 needs to give warning when $V > 200$ mph indicating results are extrapolated.
- Solid signs shows both Case B and C, even if only Case C is required

Version 2480
July 1, 2024

- Fixed UCUIDG object reference error.

Version 2479
June 25, 2024

- Fix 'DeferRefresh' is not allowed error
- LShaped building had an issue on MWFRS Pressures on triangular corners of hipped roof that cause reactions to be off slightly
- Revised some of the internal code that creates the MWFRS Graphics to be more efficient
- ASCE 7-16 Ch 30 Pt 4 has language allowing it to be used for $h \leq 60$ ft, so this was added.
- ASCE 7-22 Ch 30 Pt 2 has language allowing it to be used for $h \leq 60$ ft, so this was added; however, the standard provides not figures for roof type of Mansard.
- Open roof with columns added the ability specify an offset of columns in each direction

Version 2478
June 17, 2024

- Open Buildings can now include consideration of Columns in wind loads
- Open Buildings can now include consideration of a fascia in wind loads

Version 2477
June 03, 2024

- ASCE 7-16/22 Solid Sign R_{min} and R_{max} reversed, removed B from equation for e since it was already accounted for in D_x
- Fix application freezing or crash on MWFRS Graphics

Version 2476
May 24, 2024

- Add ability on Silo/Bin/Tank to specify surface roughness
- ASCE 7-10 qh calculation for exposure B using $K_z = 0.7$ for MWFRS when it should only be for C&C
- Fix error when running an analysis on ASCE 7-22 Ch 30 Pt 5
- Add Ch 30 Part 2 special exception (60 to 90 ft) to C&C Report
- Fix missing A722 C&C Ch30 Pt 2 Exception Report Elements
- Fix missing A716 Ch 30 pt 7 C&C Diagram
- Fix error when running analysis on A722 Ch30 pt 5
- Improve performance

Version 2475
May 8, 2024

- Fix missing A722 C&C Ch30 Pt 2 Exception
- Fix sort order of C&C Summary for A722 (1' prior to 1
- Fix memory leak

Version 2474
April 23, 2024

- ASCE 7-16 MWFRS Ch 28 Pt 2 was missing data for a high wind speeds
- Wind Wizard revise wording for ASD checkbox
- Fix C&C diagram not displaying

Version 2473
April 22, 2024

- Fix CC Database Sorting issue

- Fix CC Database FileIO issue
- L-Shaped building shouldn't have allowed Ch 28 Pt 1 to be selected
- L-Shaped surfaces 10 and 11 didn't show MWFRS pressures when slope < 10 deg

Version 2472
April 5, 2024

- Gust factor calculations were not being displayed for other structures
- Metric input echo was sometimes converted twice resulting in very high values

Version 2471
Mar 28, 2024

- Fix missing Base Elevation when opening existing files

Version 2470
Mar 22, 2024

- Monoslope roof wasn't showing MWFRS pressures for Wind Normal to Eave
- Solar Equalization Factor (Fig 29.4-8) was not being calculated correct, this was introduced in v2464

Version 2469
Mar 20, 2024

- Fix validation issue for Components and Cladding
- Fix so Zone 1' comes before 1 in C&C
- Fix C&C Output for FBC 20 and FBC23 for Other Structures (Canopy, etc..)
- Change demo defaults to Risk Category IV so that Tornado can be used in demo

Version 2468
Mar 11, 2024

- Elevated building floor was not being calculated

Version 2467
Mar 7, 2024

- Internal changes to address a potential issue with losing calculated values

Version 2466
Feb 29, 2024

- Fix Laptop Ult license issue

Version 2465
Feb 23, 2024

- Fix input value errors on values >= 1000 getting reset

Version 2464
Feb 21, 2024

- Building Inputs were unintentionally being shown for all Other structures, when it should only have been Solar Roof
- Solar Roof calculations cleaned up to be more organized and professional (Subscript, greek letters, etc..)
- ASCE 7-05 when metric selected the constant was still displaying at 0.00256 instead of 0.613

Version 2463
Feb 09, 2024

- MWFRS Roof Pressures revised to provide all pressures for +/-GCPi & CpMax & Cpmin

- MWFRS Roof Pressures corrected minimum pressure to reflect that it's only on vertical plane normal to wind direction
- Improve FBC header references to refer back to ASCE 7 when applicable

Version 2462
Jan 25, 2024

- FBC 23 Parapet wasn't calculating C&C

Version 2461
Jan 24, 2024

- A722 & A716 when Monoslope and Slope < 3° the Overhangs were included in C&C Summary
- A722 When Elevated building with floor used, it changed building dims after analysis.

Version 2460
Jan 11, 2024

- Ch 30 Pt 1 should have been allowed for domed roof (A710,A716,A722)
- Sign Solid did not utilize Thickness in 3D graphic
- FBC 23 Figures, Equation & Section references didn't always show correctly
- Hipped Roof allow user to enter End slope and have Hipped Length auto calculated
- Fix Print Preview of 3D Model Error
- Add option to manually override Minimum Pressure, primarily created to handle Florida Residential Code

Version 2459
Jan 04, 2024

- Fix Manual Elevs should not pre-populate with Top of Parapet and Top of Building Heights Error

Version 2458
Jan 04, 2024

- Fix Table Width too wide on PDF
- Fix Video's working in Help
- Prevent app crash on anyalysis for Ch30pt4 with Parapet and C&C Summary
- Fix Installation on ARM Platforms

Version 2457
Dec 7, 2023

- Fix Kz conversion error
- Speed improvements for New File, Save File, and Load File
- ASCE 7-22 Monoslope Roof < 3° didn't account for Partially Open on C&C

Version 2456
Dec 05, 2023

Version 2455
Dec 04, 2023

- Fix Performance Related issues
- Fix Current Director issues
- Fix invalid ShowReacs Error Message

Version 2454
Nov 28, 2023

- Fixed Override Mean Roof Height error on Solar Panels on Roofs
- Fixed Missing Override GCpi Value on Buildings

Version 2453
Nov 12, 2023

- Fix issues with printing models

- Base Distance adjustments not always retained
- Overhang C&C pressures not populating if just C&C summary is selected
- Fix equation displayed for Q, the calculation was correct and the displayed formula was the only issue.
- Make some headers bold that were regular font

Version 2452
Nov 6, 2023

- Add ability to manually specify the GCpi value
 - Allow user to Manually Override GCpi value
 - Fix multiple issues with Overhangs in Different C&C Methods & Roof types
 - Wind Parallel to Ridge on Hipped end was fixed to match recommendation by ASCE 7 Wind Subcommittee
- Link to Article on Hipped End:
https://meca.freshdesk.com/a/solutions/articles/43000715289?utm_source=Help&utm_medium=MecaWind
- Knowledge Based Article on Hipped End
- ASCE 7-05 fixed MWFRS criteria for Low rise to remove requirement for Least Horizontal Dimension check
 - L-Shaped fix wind arrows to show up in the right place
 - L-Shaped update wind directions on MWFRS to be +X, -Y, -X and +Y rather than A, B, C and D
 - L-Shaped Fix missing wall from MWFRS graphic
 - Open Monoslope MWFRS Graphics show minimum pressure from both 0z

Version 2451
Oct 18, 2023

- Florida Building Code 2023 8th Edition was Added
- Building validation being checked even if structure was not a building
- Bin/Tank/Silo fixed bug where sometimes MWFRS wind on cylinder wall not calculated

Version 2450
Oct 12, 2023

- Fix Natural frequency Requirements for Ch 27 Pt 2
- Fix A705 CC Low-Rise removed criteria requiring least-horizontal criteria be followed because ASCE 7-05 indicates AND buildings ≤ 60 ft.
- Improve performance and visual elements.

Version 2449
Sept 26, 2023

- Fix NullReferenceException errors
- Fix Endless refreshing of Solid Signs and other models
- Loading time improved
- Fix OpenRoof saving issue
- Fix C&C Ch30pt6 including building criteria issue
- Fix Validation for EHT > 60 ft for stepped roofs

Version 2448
Sept 13, 2023

- Fix NullReferenceException errors
- Fix Analysis Settings missing Validation errors and warnings
- Improved Report Buttons Layout

Version 2447
Sept 05, 2023

- Fix CefSettings.BrowserSubprocessPath not found errors

Version 2446
Aug 29, 2023

- Fix Help TOS Issues

Version 2445

Aug 29, 2023

- Fix Solar Panels on Roof to allow C&C method to be selected
- Improvements made to Chimney calculations
- Fix Help TOS Issues

Version 2444

Aug 24, 2023

- Fix Analysis Table Note Errors
- Canopy fix Kh to display correct value and remove GCpi which are not needed
- Open building remove 180 ° directions from pitched and troughed, since not needed
- Open buildings fix some of the references that were showing wrong info
- Add videos to improve help throughout applications

Version 2443

Aug 21, 2023

- Solar on Roof correct reference 39.4.4 to be 29.4.4 and expand on help
- Solid sign fix help and tooltips as well as validation
- Open sign fix validation for solidity ratio
- Chimney tapered option was very slow
- Tower add logic to force top entry to match bot entry from above
- Parapet improve height tooltip to indicate it's measured from lowest point.
- ASCE 7-16 Ch 30 Part 2 should have only applied to Enclosed buildings
- Solar Panels on Roof shouldn't have been allowing selection of Ch 30 Part 1
- ASCE 7-22 Roof Pavers wasn't showing a C&C Diagram
- ASCE 7-22 Solar on Ground did not have a valid selection for MWFRS method (Ch 29). Clean up validation.

Version 2442

Aug 20, 2023

- Fix selecting Dome Building Error.
- Fix Overhang & Soffit selection issue.
- Fix Populate C&C for Custom Overhangs.
- Report settings improvements to add and remove a header/footer.
- Fix C&C diagram when Elevated building floor is selected.

Version 2441

August 17, 2023

- Improve Report Output for C&C Summary.
- Missing UniqueAreas Button on C&C Tab.
- Missing Overhang summary for Soffit.
- Fix error on Standard Menu when using wizard first.
- Improve Report Settings.
- Fix Custom C&C Database not saving correctly.
- Fix Analysis errors on Bin when Hd < 0.5.

Version 2440

August 04, 2023

- Add Advanced Print Preview Capabilities.
- Fix errors when changing standards in Wizard.
- Fix issues with missing report info for Freestanding Walls Attached to a Wall missing pressures.

Version 2439

July 17, 2023

- Updated Open building C&C Figures which weren't being shown.
- Update graphics library (Eyeshot 2023)

Version 2438

July 10, 2023

- Fix export report tables to Excel error
- Fix unit type not updating on loading a file
- Fix unit type not updating for solar structures on unit type change

Version 2437
July 6, 2023

- Fix performance related issues
- Fix Object reference not set to an instance of an object on Analysis
- Fix MWFRS 3D issues
- Improve report output for SolidSign
- Fix invalid C&C part for Solid Sign issue
- Improve Parapet Height Entry and Validation

Version 2436
June 26, 2023

- ASCE 7-10/16 MWFRS Ch 28 Pt 2, Figure 28.6-1 was corrected on Load Case B
- Corrected Elevation on 3D Graphic for Elevated building
- Fix Report a Bug unable to send error
- Fix Various Report formatting issues
- Fix Scientific Notation Data Entry issues
- Update Analysis Window
- Fix PDF Report formatting issues
- Fix Missing C&C image missing object error

Version 2435
June 12, 2023

- Fix missing Zone on ASCE 2016 and 2022 Partially Open buildings
- Fix Sequence contains no elements on Analysis Error

Version 2434
June 7, 2023

- v2433 changed some parapet calculations, and now C&C summary wasn't working for Parapet
- Bug where a building without Overhang was indicating as if it had an Overhang with Soffit

Version 2433
June 6, 2023

- Fix invalid slope warning
- Fix A716 Ch 30 Pt 6 Parapet considering the 2' and 3' when applicable
- Parapet revised to show all applicable roof zones
- Fix Overhang with Parapet applying special criteria for OHS

New Report Functionality

- Export Tables to Excel
- Custom Report Header
- Custom Report Footer
- Improved Formatting
- Reduced File Sizes
- Improved performance and responsiveness
- Copy to Clipboard Capabilities
- Single window preview

Version 2432

- Gabled Overhang with slope < 7 deg incorrectly showing 2' and 3'
- Gabled Overhang not showing pressures on MWFRS Graphics for sides

Version 2431

- Overhang issue where it wasn't recognizing Overhang with and without soffit
- Overhang GCpi was always displaying 0 in table
- Overhang for Monoslope A716 and A722 revised to use Fig 30.3-5a and 30.3-5b for the Top surface and

wall for the bottom surface.

Version 2430

- Overhang table wasn't always displaying for C&C
- MWFRS for transverse frames (Open buildings) not including Kb and Ks

Version 2429

- Solar Ch 29.4.4 added C&C Image
- ASCE 7-16 Ch 30 Pt 2 fixed missing C&C Image and a parameter
- Clean up issues found with calculation reports

Version 2428

- Fixed various report formatting issues
- Fix viewing issues on alternate window themes

Version 2427

- ASCE 7-16 Fig 30.3-3 for Stepped, had incorrectly applied special note for Zones 2 & 3 and removed 1 instead of 1'
- ASCE 7-2 Fig 30.3-3 for Stepped, removed 1 instead of 1'

Version 2426

- When ASCE 7-05 selected hide C&C Summary option since it's not functional
- Fix issue with C&C Populate screen not updating Effective Area
- Fix issue with C&C entries not always updating Area, after a populate executed
- Hipped Roof Cp for Hipped ends parallel to ridge should have been using Parallel to ridge criteria
- Arched roof wasn't including IsElevated Option
- Include C&C Method validation to check that canopy is ≤ 60 ft
- Change header color for Kd override to be pink, because Red was confused with validation error

Version 2425

- Add advanced options checkbox on general tab to hide/show options that are not typically utilized
- ASCE 7-16 doesn't have any C&C methods for Partially Open. Followed ASCE 7-22 which has Ch 30 Pt 1 stated as being applicable for Partially Open
- Fix issue with elevation break in the middle of a parapet not showing MWFRS pressures
- Fix bug restricting use of ASCE 7-10 for ultimate only, it should be applicable for all versions
- C&C Populate, add option to include Roof zones, wall zones or both

Version 2424

- Rolled back CEFSharp to 109.1.110 so that Windows 7 and some versions of Windows 8 would be compatible
- For ASCE 7-16 Fig 30.3-2a made zone 1' the first one that is populated
- Fixed problem where Partially Enclosed and Partially Open didn't automatically update screen and graphics

Version 2423

- MWFRS 3D graphics, add toolbar to allow control of graphics
- Fix problems with opening old files with open buildings
- Fix sign problem with Proof calculation for max case
- Refactor G calculation that sped up calculation
- Fix incorrect reference for ASCE 7-22 Ch 28 Pt1 and 2 (Since 1 and 2 no longer applicable)
- ASCE 7-16 Ch 30 Pt 3 and ASCE 7-22 Ch 30 Pt 2 add Elevation to second table for C&C
- L-Shaped buildings fix validation issues
- ASCE 7-22 Parapet needed refactored to include Kd in pressure calculation

- LShaped Fix End2 Overhang C&C that was using End1 data
- Tornado corrections
- Cleaned up some Input Echo for Ch 26 that wasn't applicable for C&C and Parapet
- C&C add 'a' parameter to input screen for reference
- L-Shaped fix graphics for gabled ends
- ASCE 7-22 Ch 28 with Parapet had a bug causing error
- Domed roof allow a cylinder height to be zero without messing up Cp_C values

Version 2422

- Fix Arched roof entries and model update
- Removed Perform analysis from top menu since validation not tied to it.
- Fix open building validation issues with Trans Frames
- Improved Report a Bug option to display more info
- Fix problem with selecting TOC items and not showing up in printed/saved report

Version 2421

- Fix validation problem with Freestanding Wall that required $h > s$ instead of $h \geq s$
- Solid Sign Cf was calculating as 0 for $B/s > 4$ for case C
- Solid Sign changed Rlr to interpolate for B/s between 4 and 5, for 0 to s.
- Multi-span gabled improved to allow for multiple gabled modules to be considered in analysis
- Fixed A716 Ch 28 Pt 1 the 'Light frame' option had description and tooltip same as flexible diaphragm
- Ch 30 Pt 6 for canopy the table wasn't being included in the printed output.
- For building display the mean roof height even when override not selected

Version 2420

- Attempting to fix random 'DeferRefresh' errors occurring
- Automatic update of Slope, Pitch and RidgeHt was not working consistently
- Solid sign validation fixed
- Multi-span gabled improved to allow for multiple gabled modules to be considered in analysis
- Sawtooth improved to allow for multiple monoslope modules to be considered in analysis

Version 2419

- Correction to Solar calculation to consider Ge in pressure uplift
- Automatic update of Slope, Pitch and RidgeHt was not working consistently
- Solid sign validation fixed
- Multi-span gabled improved to allow for multiple gabled modules to be considered in analysis
- Sawtooth improved to allow for multiple monoslope modules to be considered in analysis

Version 2418

- Roof Slope, pitch and ht not automatically updating on change, also not updating graphic (Enclosed Gabled)
- Add tapered option on Chimney menu

Version 2417

- Fix issue when C&C Method is set to None
- Wizard was not working
- Tower and Chimney set up to pre-populate with starting entries
- Open building graphic not refreshing upon FileIO

Version 2416

- Fix when file with *.wnd double clicked it launches application and opens file
- Fix bug introduced in 2415 that would not clear C&C entry data when new file initiated
- Hipped validation errors not being cleared
- Enclosure Type wasn't always setting correctly, indicated Open when Enclosed

Version 2415

- Add lines to all tables in output to improve the format

- Add option to Populate C&C by either Overwrite or Append existing data, and also be able to specify a custom description.
- When C&C Elevations require, add option to allow it to be entered locally or globally.
- Fix bug that allowed C&C elevation entry even for methods not utilizing it
- Show C&C Figure even if Summary selected, and no C&C entries made manually
- Fix various other issues encountered

Version 2414

- Fix some issues with Stepped roof zones and figure not being correct
- C&C figure was not updating when dependent values changed.
- Add validation check to make sure at least MWFRS or C&C method has been selected
- Fix MWFRS pressure on hipped ends to use Cp for normal to wind when wind is parallel to ridge.

Version 2413

- Remove 'Beta' designation and make it the live production version.
- Security updates for new product model

Version 2412

- Fix issues with Demo
- Fix tornado option to show up for other structures (Tower, Chimney, Open Sign)
- Fix validation issue where error wouldn't clear for Chimney and Tower
- Correct issue with Tornado Checks to see if valid

Version 2411

- Fixed security issue when there is no license present for a new user.
- Fix problem with C&C when changing from Ch 30 Pt 4 to Ch 30 Pt 3
- Fix bug with Solid Sign

Version 2410

- Tornado loads added. This will be an option that is only available in the Ultimate version of MecaWind (Which is in the process of being set up), but for a limited time all licensed users will have access to the Tornado option.
- Fix other bugs found during testing
- New users can get an overview of the software by watching this video:
[Watch YouTube Video](#)

Version 2409

- Ch 30 Part 3 (All standards) add Area column to C&C table with Pressure
- Added a video to give an overview of how to user application:
[Watch YouTube Video](#)

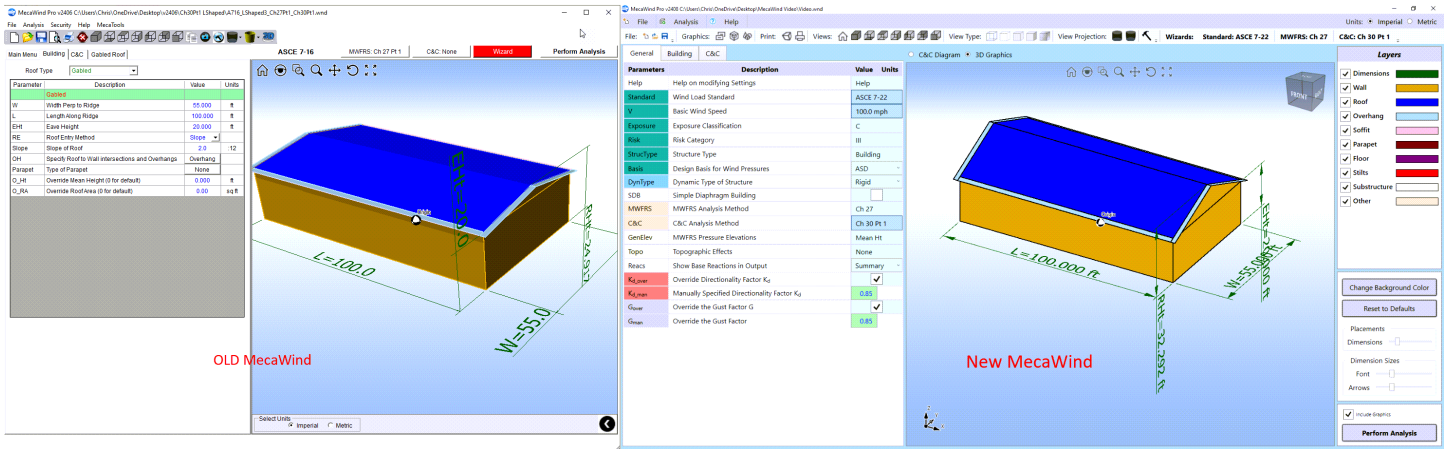
Version 2408

This version represents a major re-writing of the entire application on a new platform that will give a more stable, professional and reliable application.

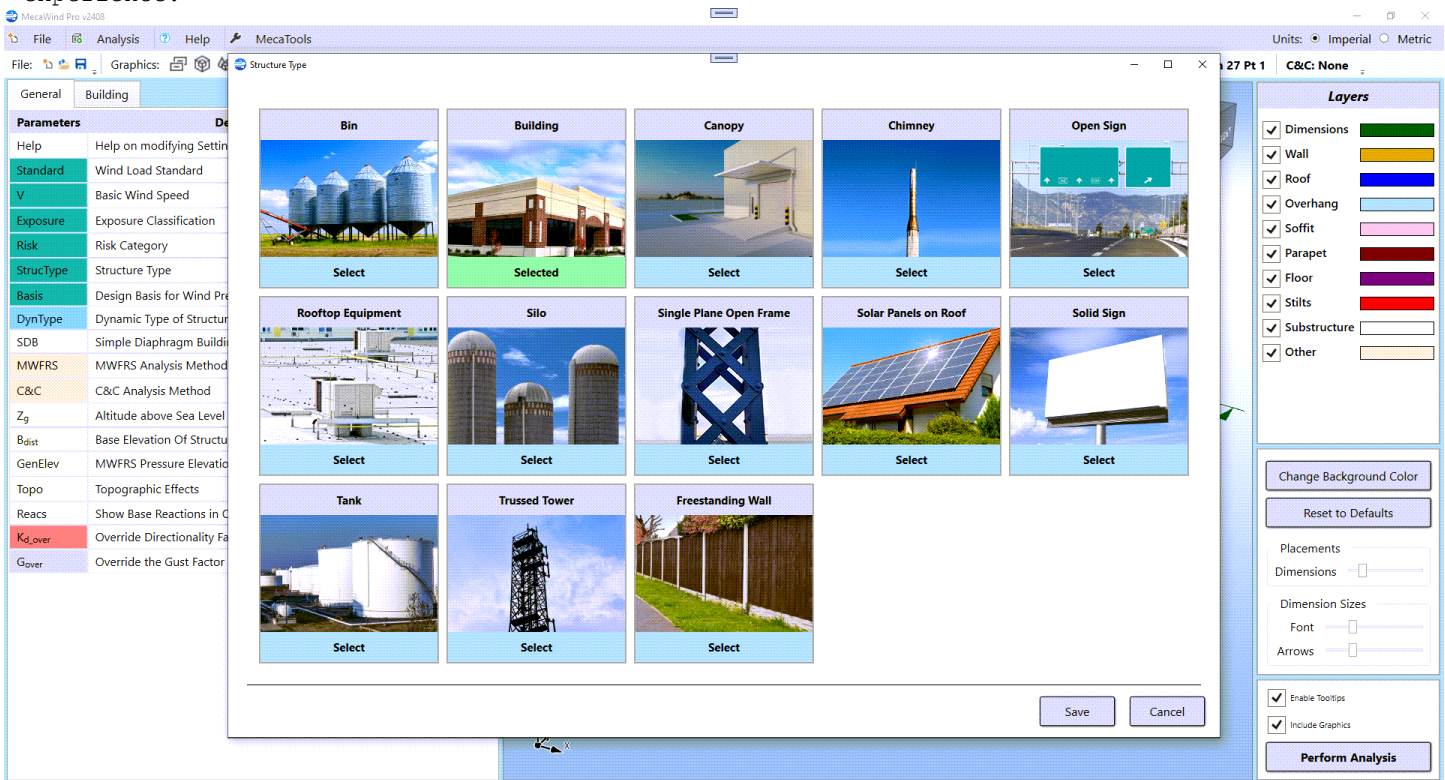
- Added a video to give an overview of how to user application:

Video is still in editing and not ready to be released at this time.

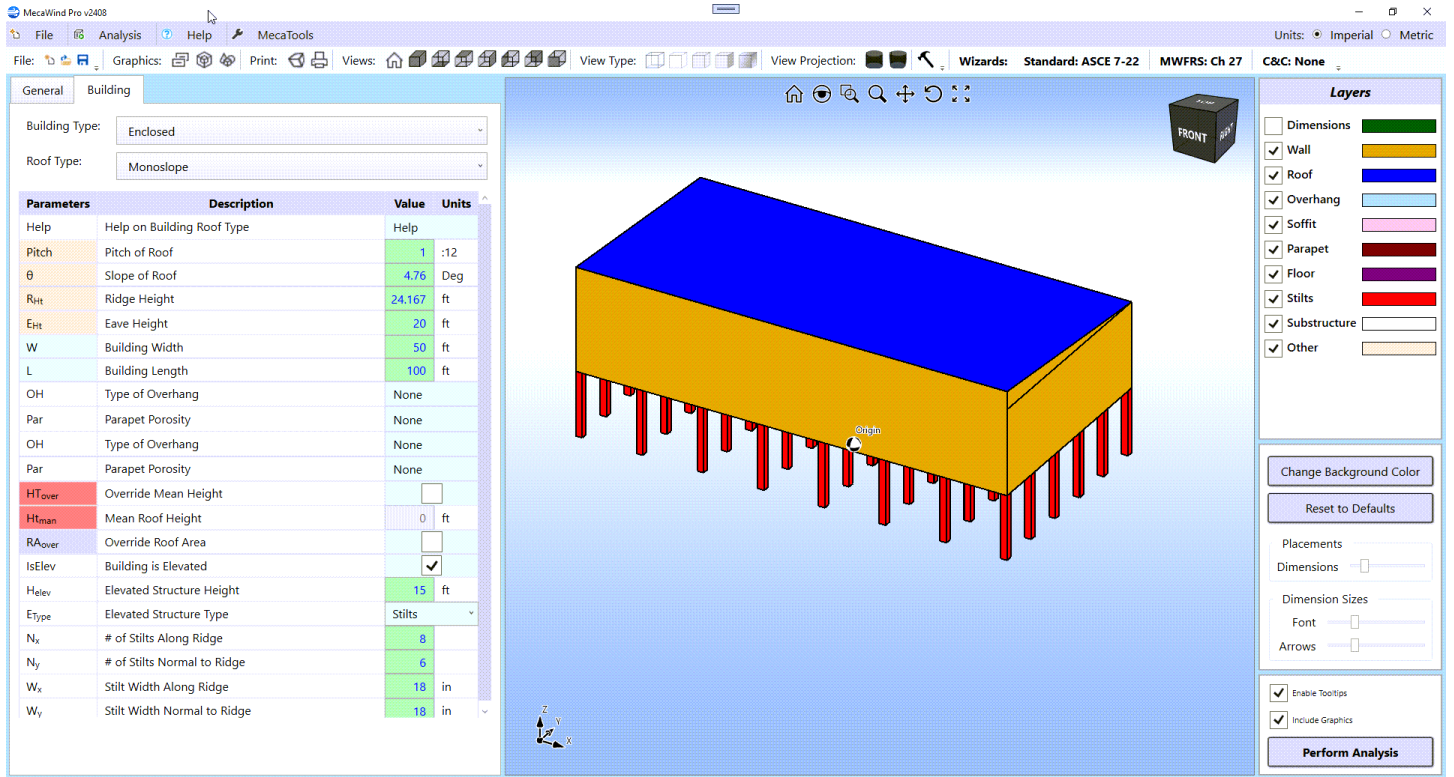
- The new application is laid out very similar to previous versions.



- New security/licensing menu that is more intuitive and reliable
- Output report formatting improved to look more professional
- The output formats (PDF, etc..) is more reliable
- The help manual has been rewritten and targeted help dispersed throughout the application
- New application should look better on a wider variety of screen sizes and resolutions
- Visually the software has improved to utilize more help and images to improve the user experience.



- A new validation system has been implemented that is Red when there is an error and Yellow for warnings, this is intended to give users instant feedback when there is a problem.
- Wind provisions from ASCE 7-22 Chapters 26 through 30 have been included.
- The new Elevated building option in ASCE 7-22 has been included



- Added option for Roof Pavers and Ground Solar Panels that were added in ASCE 7-22

